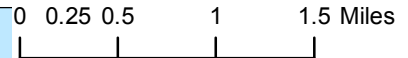
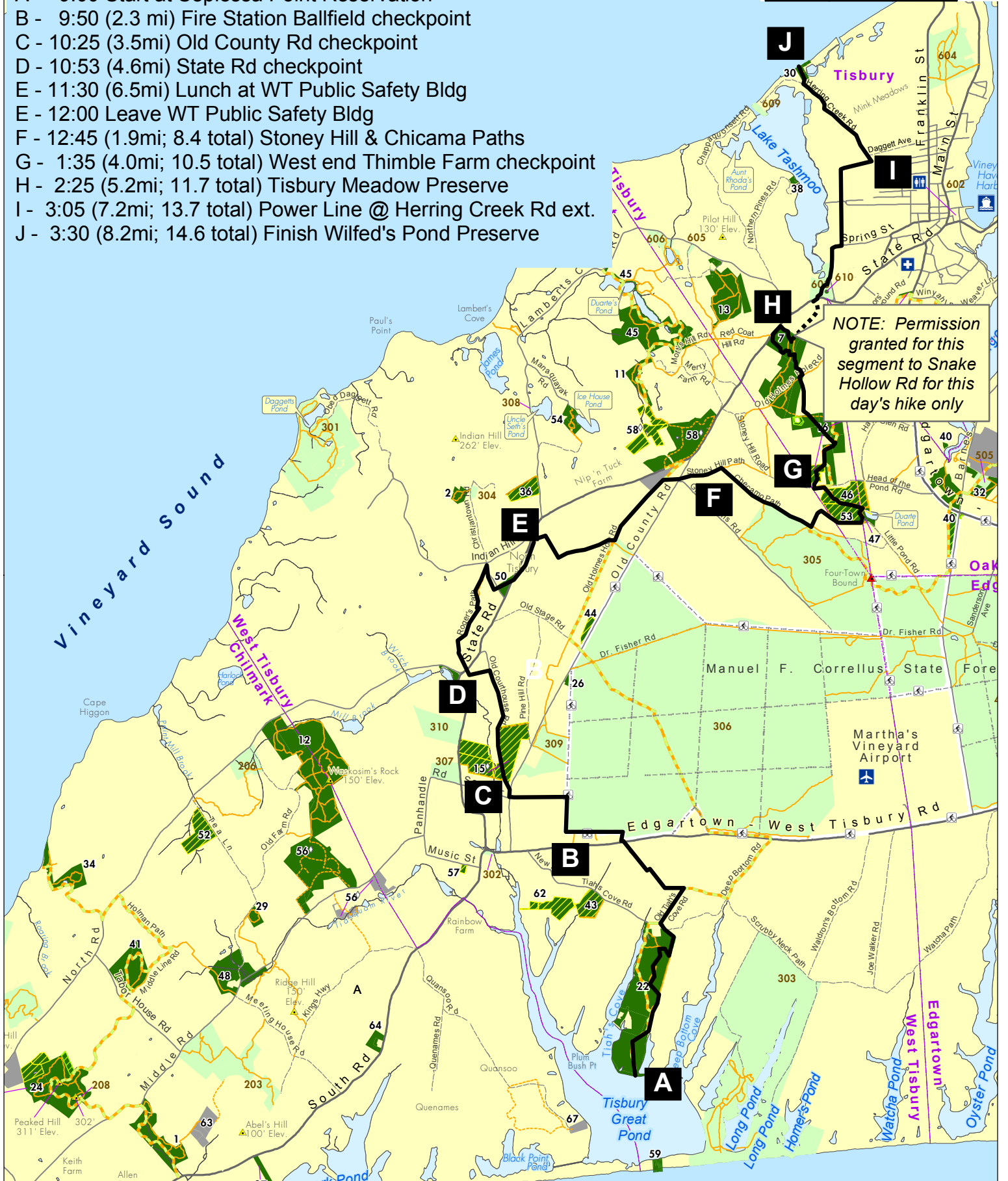




MV Land Bank 2011 Cross-Island Hike



- A - 9:00 Start at Sepiessa Point Reservation
- B - 9:50 (2.3 mi) Fire Station Ballfield checkpoint
- C - 10:25 (3.5mi) Old County Rd checkpoint
- D - 10:53 (4.6mi) State Rd checkpoint
- E - 11:30 (6.5mi) Lunch at WT Public Safety Bldg
- E - 12:00 Leave WT Public Safety Bldg
- F - 12:45 (1.9mi; 8.4 total) Stoney Hill & Chicama Paths
- G - 1:35 (4.0mi; 10.5 total) West end Thimble Farm checkpoint
- H - 2:25 (5.2mi; 11.7 total) Tisbury Meadow Preserve
- I - 3:05 (7.2mi; 13.7 total) Power Line @ Herring Creek Rd ext.
- J - 3:30 (8.2mi; 14.6 total) Finish Wilfed's Pond Preserve



NOTE: Permission granted for this segment to Snake Hollow Rd for this day's hike only